

The ABCs of Safe Driving

Three of the behaviors most predictive of a driver's likelihood to be in a collision, Acceleration, Braking, and Cornering are key components of Mentor by eDriving's validated FICO® Safe Driving Score. Use eDriving's tips below to promote these smooth maneuvers whenever and wherever you are driving.



Acceleration



Don't Race the Clock

Some drivers think that aggressive accelerating and hard braking will speed up a trip significantly. This type of driving **reduces travel time by only 4%** - the equivalent of **2.5 minutes** in a 60-minute trip, or just over **1 minute** in a 30-minute trip.



Conquer the Curves

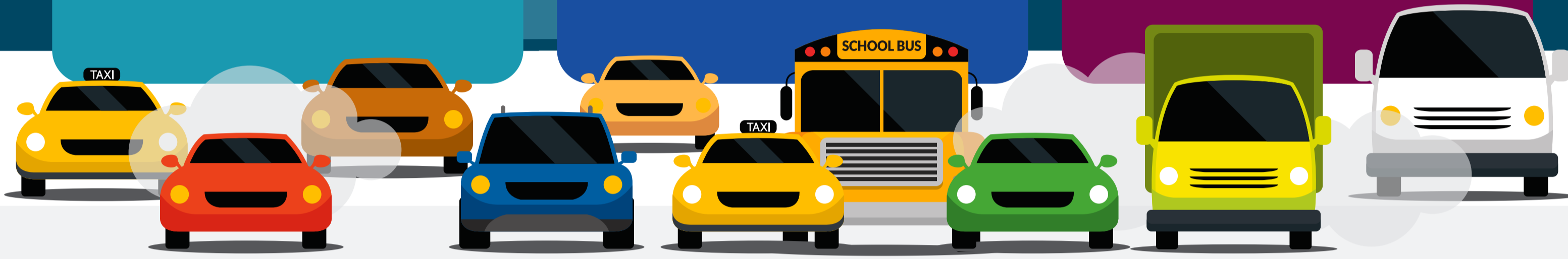
Curves and bends require skill – avoid harsh accelerating as you are turning since this can lead to loss of control.

- Slow down gradually on the approach
- Maintain a steady (safe) speed as you turn
- Accelerate gently as you start to leave the curve or bend



Smooth Acceleration Advantages

- Avoid skidding and loss of control
- Reduced wear & tear
- Lower fuel consumption and emissions
- Avoid jack-rabbit starts
- Reduced driver and environmental stress



Braking

The faster you go, the longer it takes to stop.

Stopping distance will depend on factors such as attention (thinking distance), road surface, weather, and tire condition.

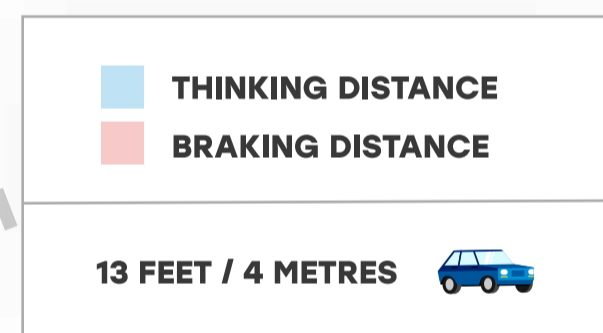
30 MPH / 48 KPH



50 MPH / 80 KPH



70 MPH / 113 KPH



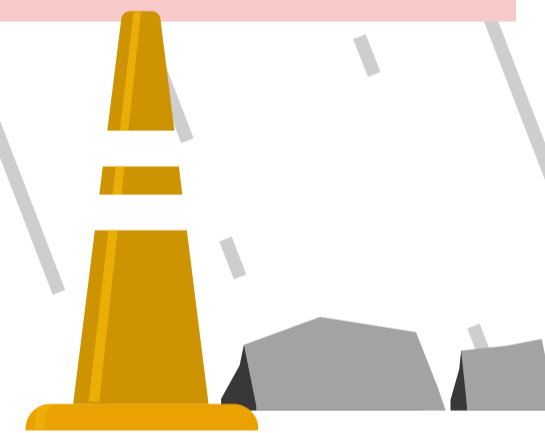
And, in bad weather, it takes even longer.



Up to **2x** as long in rain.

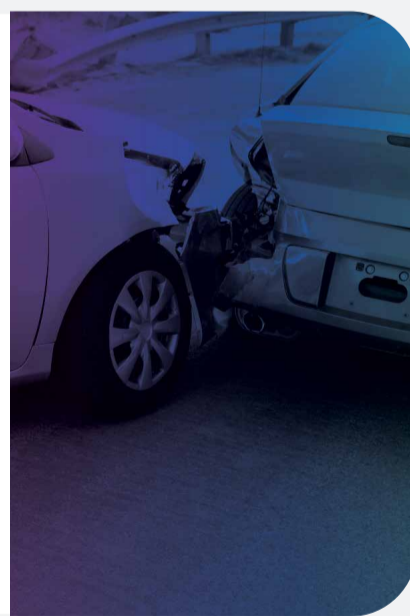


Up to **10x** as long in icy conditions.



Refuse to Rear-End

When approaching a stationary vehicle at an intersection/junction or traffic light, stop far enough behind the vehicle in front so that you can see its rear TIRES and can also see TARMAC on the road behind it.



To Pump or Not to Pump?

If your car is equipped with Anti-lock Braking System (ABS), there's **no need to pump the brakes in icy conditions**; however, doing so may still be helpful if your car does NOT have ABS.



Cornering



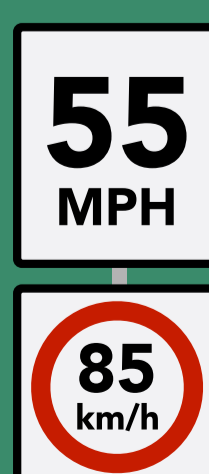
Don't Cut Corners

Never overtake or pass on a bend, or on the approach to a bend, as you have no way of knowing whether a vehicle or hazard is coming in the opposite direction.



Use Your Cues while Cornering

When approaching a corner, look for clues like roofs of homes, signage, tree lines, and reflections which can help you to identify potential upcoming hazards.



Take Time for Tire Inspection

Tires that are worn, damaged, or improperly inflated can greatly affect the handling of your vehicle, especially when cornering.

On a weekly basis you should check:

- Pressure
- Tread depth
- Tread and sidewall appearance, looking for damage such as cuts, splits, and bulges